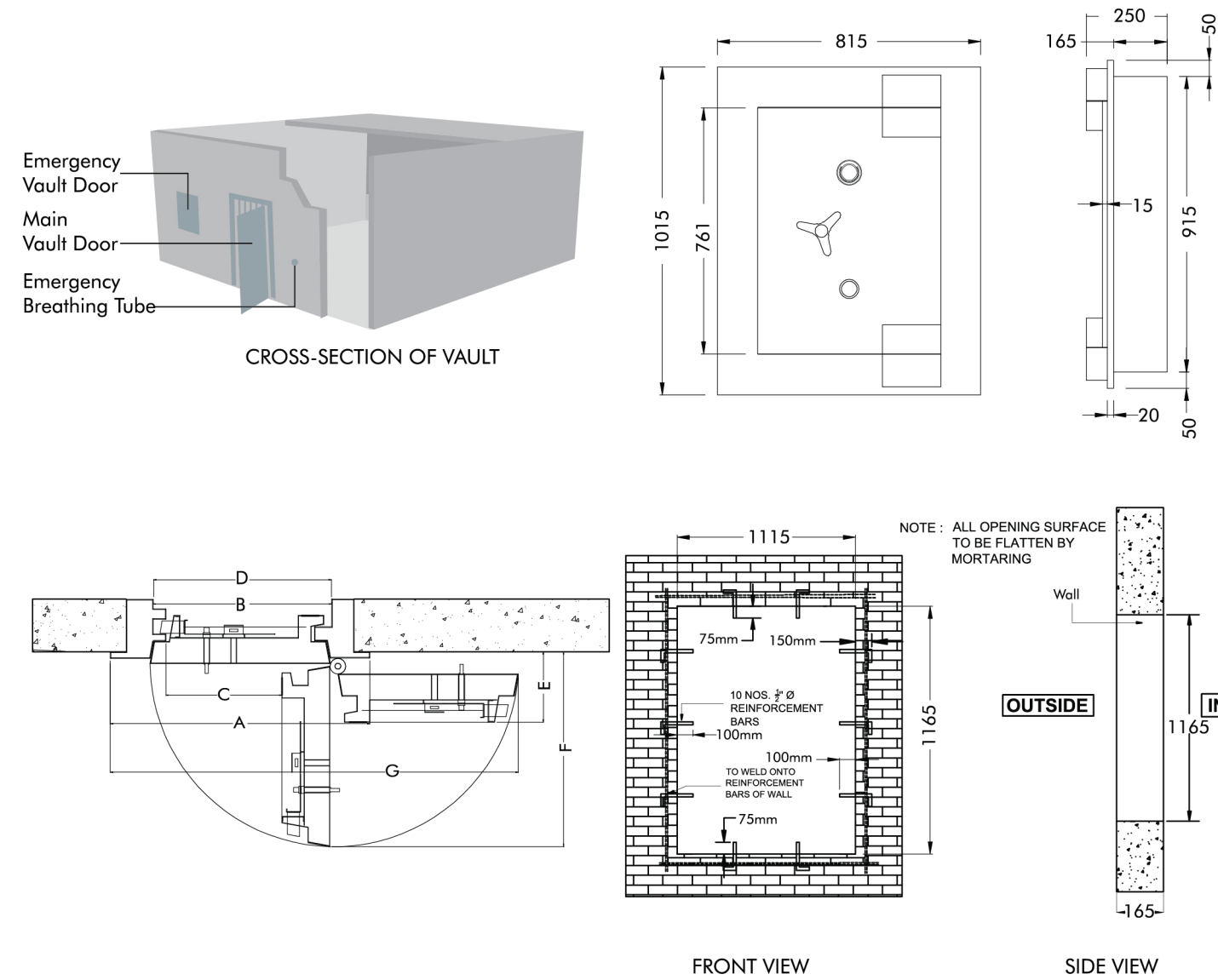


EMD100 (4") & EMD130 (5")



TECHNICAL DIMENSION FOR INSTALLATION OF EMD100 (4") & EMD130 (5")

Ref	Description	Description	
		MM	Inches.
A	Overall door frame	815W x 1015H	32.0"W x 40"H
B	Clear opening at 180°	475W x 685H	18.7"W x 27"H
C	Clear wall opening at 90°	355W x 685H	14.0"W x 27"H
D	Clear wall opening of installation	550W x 635H	21.5"W x 25"H
E	Projection of door opened at 180°	230	9.0"
F	Projection of door opened at 90°	615	24.3"
G	Overall width of door opened at 180°	1230	48.4"

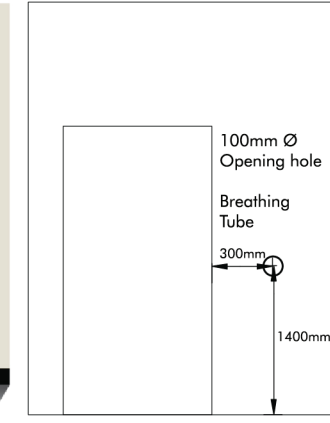
EMERGENCY BREATHING TUBE (Optional)

In the event that personnel being vault, emergency breathing tube provide fresh air, passing of water and food and two way communications. It is free maintenance and power supply is not required.



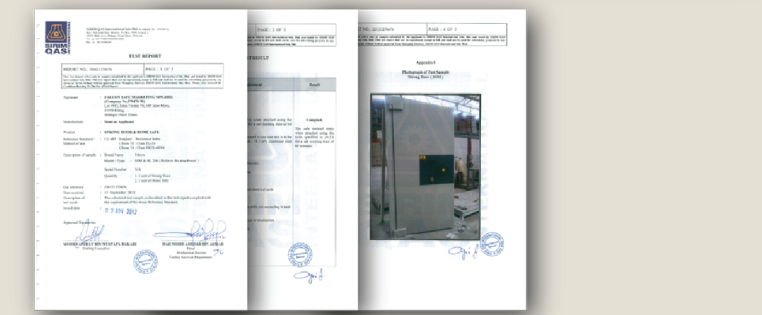
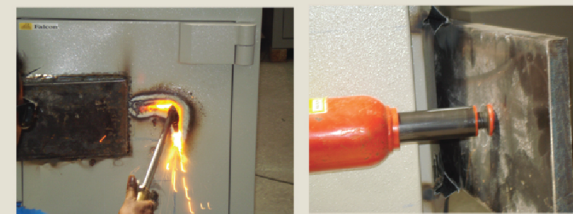
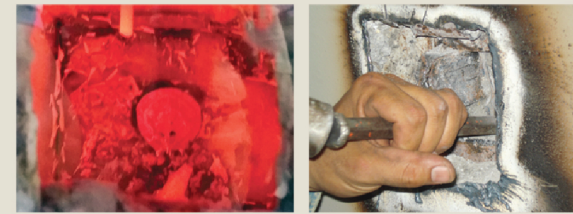
Wall Thickness
• 6" - 9"
• 9" - 12"

Chrome Finished



EMERGENCY VENTILATOR (Optional)

An emergency ventilator is integrated into the door frame to provide fresh air, allow two way conversation and to supply food or water to anyone trapped in the strongroom. Connection to power supply is required.



**VAULT DOOR SERIES
SSM100 (4") & SSM130 (5")**



www.falconsafe.com

This Catalogue has been designed for distribution throughout many international markets. Thus, some specifications, comparisons and information set forth herein may not apply in all markets. Falcon's policy is one of continuous improvement, the right to change specifications without prior noticed is reserved.

FALCON VAULT DOOR SERIES

SSM100 (4") vault door overall thickness measuring at 225mm while SSM130 (5") overall thickness 255mm secured with a series of heavy duty 38mm diameter bolts. The door back anchored with Falcon vertical reinforced interlocking rebate system for positive protection ensuring the door remain shut and locked even hinges are attacked and cut off.



BARRIER MATERIAL

Door slab consists of special formulated high strength concrete mixture (SF2000) and anti-drilling attack thermo-alloy harden plate. It comprises a few different layers of concrete and barrier material to resist burglary attack.

LOCKING MECHANISM

Falcon vaultdoor and strongroom door come with standard locking system secured by Sargeant and Greenleaf (S&G) 3 wheel combination lock with a security capability of 1,000,000 combination variations and KABA MAUER UL-listed president 8 lever mechanical key lock with approximate 280,000 theoretical variations. Additional keylock, 4 wheel combination lock or digital lock can be fitted on request as an option.

FEATURES



EMERGENCY DOOR

Emergency door is an optional solution for emergency exit of vault with such a requirement. Meanwhile, in the event that personnel being vault, emergency breathing tube provide fresh air, passing of water and food and two way communications.

TIME LOCK (OPTIONAL)

To provide optimum security over long weekends, holidays or after office hour, an adjustable two or three movement time lock can be installed. This system maintains the door in fully lock position even with the correct keys & combinations until the preset time has elapsed. This ultimate security also ensure no opening attempt under duress.

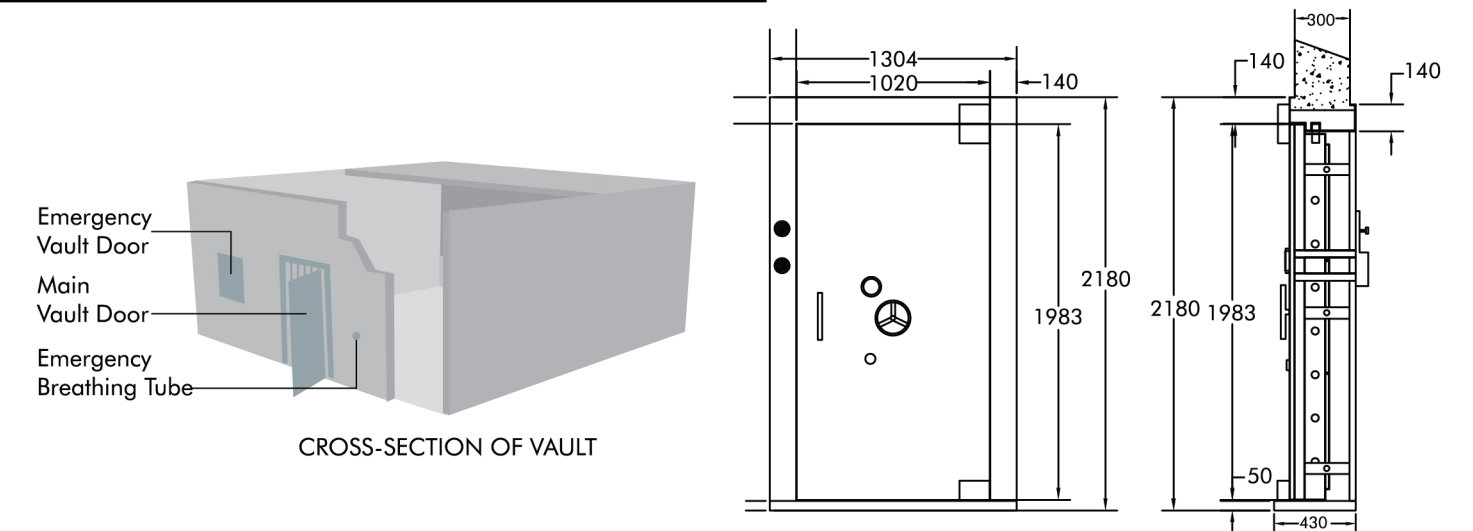
DIGITAL LOCK (OPTIONAL)

Upgradable to the following digital locks.

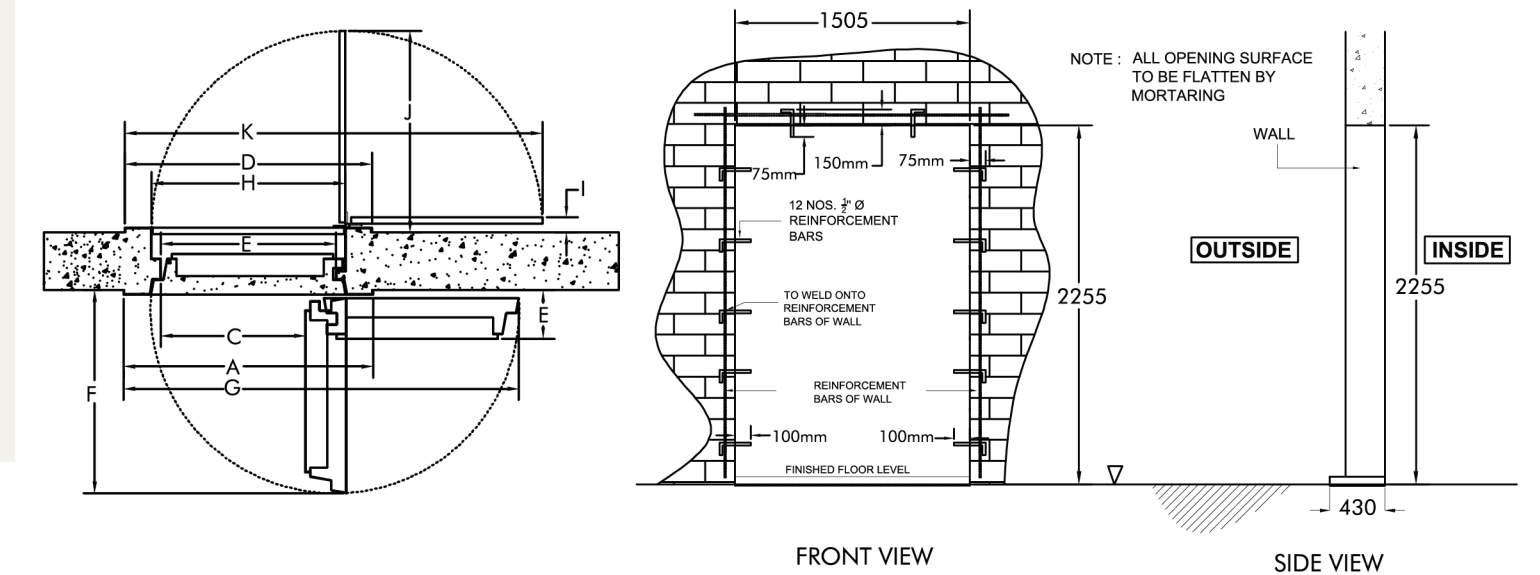
- S&G UL-Listed A series lock
- KABA Auditcon 525
- Lagard Audit 66E



VAULT DOOR SSM100 (4") & SSM130 (5")



CROSS-SECTION OF VAULT



FRONT VIEW

SIDE VIEW

SSM SERIES VAULT DOOR SUMMARY

Model	Protective Thickness	Overall Thickness	Barrier Material	Boltwork Mechanism	Weight (Kg)
SSM 100	100mm (4")	225mm (9")	SF2000	7 Horizontal / 2 Top / 2 Bottom / Vertical Rebate	1300 Kgs
SSM 130	130mm (5")	255mm (10")	SF2000	7 Horizontal / 2 Top / 2 Bottom / Vertical Rebate	1500 Kgs
EMD 100	100mm (4")	225mm (9")	SF2000	3 Horizontal / 2 Top / 2 Bottom / Vertical Rebate	500 Kgs
EMD 130	130mm (5")	255mm (10")	SF2000	3 Horizontal / 2 Top / 2 Bottom / Vertical Rebate	600 Kgs

TECHNICAL DIMENSION FOR INSTALLATION OF VAULT DOOR SSM100 (4") & SSM130 (5")

Ref	Description	Description	
		MM	Inches.
A	Overall door frame	1285W x 2175H	50.5"W x 85.6"H
B	Clear opening at 180°	925W x 1955H	36.4"W x 77.0"H
C	Clear wall opening at 90°	730W x 1955H	28.9"W x 77.0"H
D	Clear wall opening of installation	1220W x 2145H	48.0"W x 84.4"H
E	Projection of door opened at 180°	320	12.6"
F	Projection of door opened at 90°	1050	41.2"
G	Overall width of door opened at 180°	2120	83.1"
H	Overall width of gate	1020W x 1955H	40.1"W x 77.0"H
I	Projection of gate opened at 180°	57	2.3"
J	Projection of gate opened at 90°	1060	41.6"
K	Overall width of gate at 180°	2205	86.5"

EMERGENCY RELOCKER DEVICES

Live & dead relocker will automatically activate and seizes all bolts if forcible attack are made especially by mechanical tools attacks. The relockers can be use upgraded to glass relocker protection upon request for higher level of security.

GRILLEGATE

Falcon grillegate ensure additional security and ventilation when main vault door is open for operation. Secured by tow keylocks and available with painted or stainless steel finish.

